





INDEX

- 3** ● Glow Line
- 4** ● Colors Line
- 8** ● Handles
- 10** ● Edgebanding / ● Basic
- 11** ● Various
- 12** ● Cabinet Pulls / ● Baseboard
- 13** ● Gola
- 14** ● Led Profiles
- 15** ● Doors
- 16** ● Furniture Hardware
- 18** ● SIP


- 19** ● Sliding Systems
 - Classic System
 - GE52 System
 - Office System
 - DF System
 - Sicco System



CONTACT US

520 South Avenue, Garwood, NJ 07027 

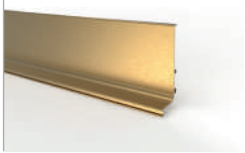
sales@decotonesurfaces.com 

908-301-0600 

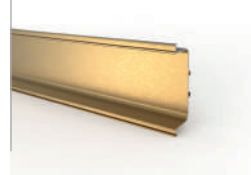


¡DISCOVER OUR NEW LINE!

Gola
UPPER GOLA GOLDEN
 Length 9.84 ft.
 Code: GSD



Gola
MIDDLE GOLA GOLDEN
 Length 9.84 ft.
 Code: GMD



Gola
UPPER GOLA POLISHED
 Length 9.84 ft.
 Code: GSP

Terminals for GSP
 Code: TGS

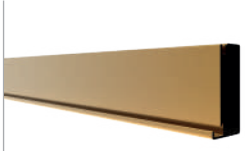


Gola
MIDDLE GOLA POLISHED
 Length 9.84 ft.
 Code: GMP

Terminals for GMP
 Code: TGM



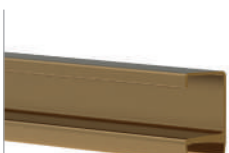
Doors
SIERRA GOLDEN
 Length 9.84 ft.
 Code: SIERRAD



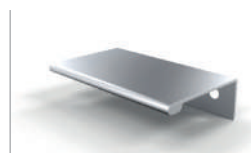
Doors
SIERRA POLISHED
 Length 9.84 ft.
 Code: SIERRAP



Handles
MC GOLDEN
 Length 9.84 ft.
 Code: MC18D / MC19D



Cabinet Pulls
CLASS POLISHED HANDLE
 1"37/64 - 2"3/4 - 4"9/16 - 8"11/32
 Code: CL40P / CL70P / CL116P / CL212P

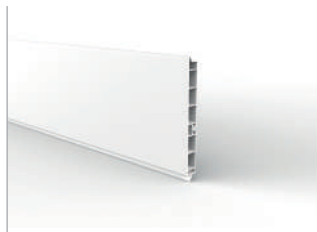


PVC Baseboard Colors

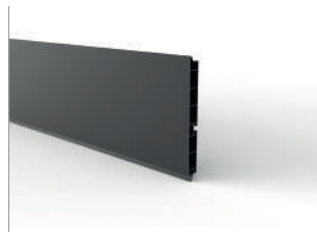


BASEBOARD

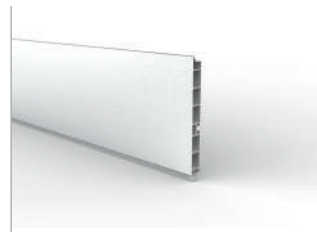
Length 9.84 ft.



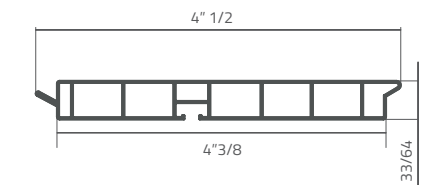
Code: ZP12B - White



Code: ZP12N - Black



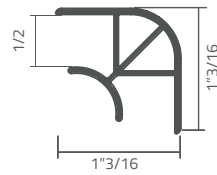
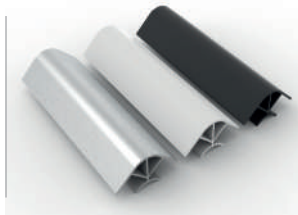
Code: ZP12A - Brushed Aluminum



CORNER BRACKET

Lengths 4" 23/32

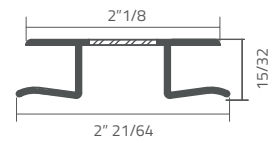
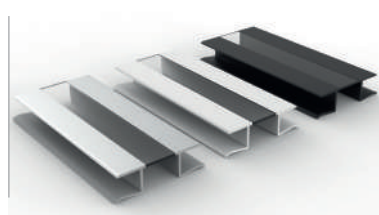
Code: EZP12N- EZP12B - EZP12A



BASEBOARD JOIN

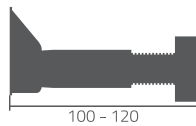
Lengths 4" 23/32

Code: UZP12N- UZP12B - UZP12A



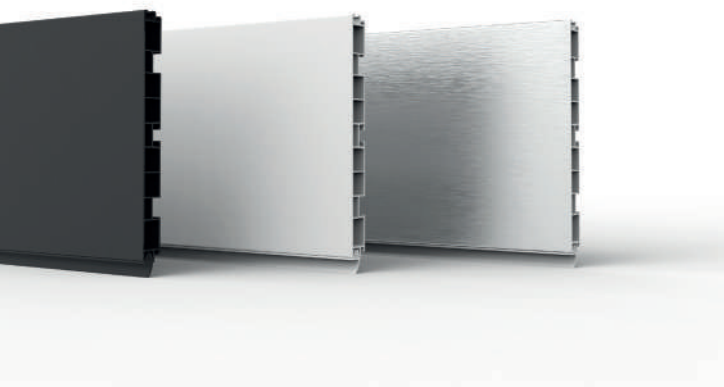
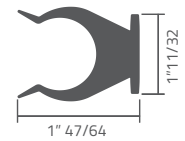
LEG

Adjustable Height
Code: PTZ



CLIP

Code: CPZ





Handles

● MC BLACK

Length 9.84 ft.

Code: MC18N/MC19N

TMC18N

Terminals for MC Black

Code: TMC18N / TMC19N



Handles

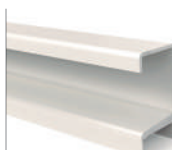
● MC WHITE

Length 9.84 ft.

Code: MC18B/MC19B

Terminals for MC WHITE

Code: TMC18B / TMC19B



Handles

● MOA BLACK

Length 9.84 ft.

Code: MOA18N / MOA19N



Handles

● MOA WHITE

Length 9.84 ft.

Code: MOA18B / MOA19B



Handles

● MHT BLACK

Length 9.84 ft.

Code: MHT18N/MHT19N



Terminals for MHT BLACK

Code: TMH18N / TMH19N





● **UPPER GOLA BLACK**

Length 9.84 ft.
Code: GSN

Terminals for GSN
Code: TGSN



● **UPPER GOLA WHITE**

Length 9.84 ft.
Code: GSB

Terminals for GSB
Code: TGSB



● **MIDDLE GOLA BLACK**

Length 9.84 ft.
Code: GMN

Terminals for GMN
Code: TGMN



● **MIDDLE GOLA WHITE**

Length 9.84 ft.
Code: GMB

Terminals for TGMB
Code: TGMB



● **INTERNAL CORNER BLACK**

Code: EIGLN



● **INTERNAL CORNER WHITE**

Code: EIGLB



VERTICAL GOLA SYSTEM

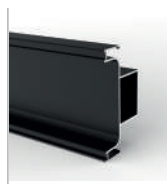
VERTICAL SIDE GOLA BLACK

Length 9.84 ft.
Code: GVLN



VERTICAL MIDDLE GOLA BLACK

Length 9.84 ft.
Code: GVMN



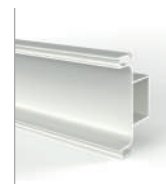
VERTICAL SIDE GOLA WHITE

Length 9.84 ft.
Code: GVLB



VERTICAL MIDDLE GOLA WHITE

Length 9.84 ft.
Code: GVMB





Doors
 ● **INTER BLACK**
 Length 9.84 ft.
 Code: INTERN



Doors
 ● **INTER M BLACK**
 Length 9.84 ft.
 Code: INTERMN
Terminals for INTERMN profile
 Code: TINTERMN



*The Inter M profile works as a handle for the Inter profile

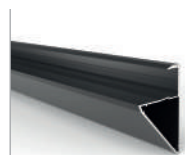
Doors
 ● **SIERRA BLACK**
 Length 9.84 ft.
 Code: SIERRAN



Doors
 ● **SIERRA WHITE**
 Length 9.84 ft.
 Code: SIERRAB



Various
 ● **BLACK SHELF SUPPORT**
 Length 9.84 ft.
 Code: SE18N/SE19N



Terminals for Black Shelf Support
 Code: TSEN



Cabinet Pulls
 ● **CLASS BLACK HANDLE**
 1"37/64 - 2"3/4 - 4"9/16 - 8"11/32
 Code: CL40N / CL70N / CL116N / CL212N

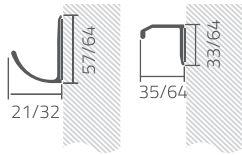


Handles



ADHJ / ADHR

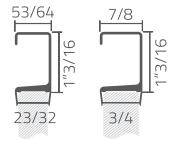
Length 9.84 ft. - Self Adhesive
Code: ADHJ / ADHR



MC

Length 9.84 ft.
Code: MC18 / MC19

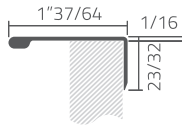
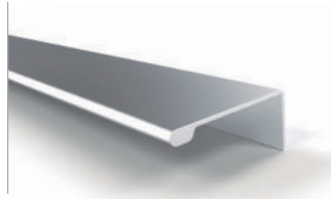
MC Handle Terminals
Code: TMC18 / TMC19



* ALSO AVAILABLE IN BLACK AND WHITE ● ○ *

CLASS

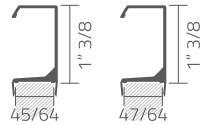
Length 9.84 ft.
Code: CL



MCXL

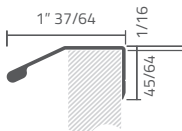
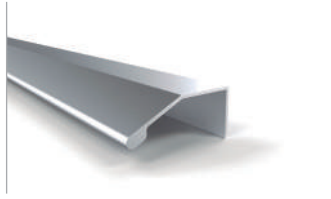
Length 9.84 ft.
Code: MCXL18 / MCXL19

MCXL Handle Terminals
Code: TMCXL18 / TMCXL19



CLASS DELTA

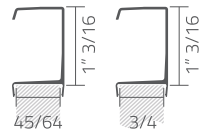
Length 9.84 ft.
Code: CLD



MCLI

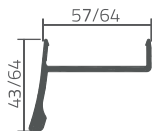
Length 9.84 ft.
Code: MCLI18 / MCLI19

MCLI 18 Handle Terminals
Código: TMCLI18 / TMCLI19



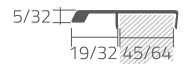
MAS

Length 9.84 ft.
Code: MAS18



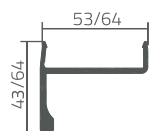
MF

Length 9.84 ft.
Code: MF18



MAQ

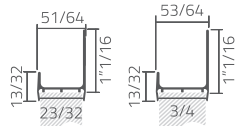
Length 9.84 ft.
Code: MAQ18



MJ

Length 9.84 ft.
Code: MJ18 / MJ19

MJ Handle Terminals
Code: TMJ18 / TMJ19



Handles



MHT

Length 9.84 ft.
Code: MHT18 / MHT19

MHT Handle Terminals
Code: TMH18 / TMH19



* ALSO AVAILABLE IN BLACK AND WHITE ● ○ *

MOA

Length 9.84 ft.
Code: MOA18/MOA19



* ALSO AVAILABLE IN BLACK AND WHITE ● ○ *

MQ 18

Length 9.84 ft.
Code: MQ18

MQ Handle Terminals
Code: TMQ18



MZ

Length 9.84 ft.
Code: MZ18

MZ Handle Terminals
Code: TMZ18



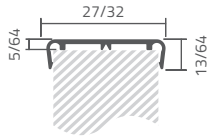
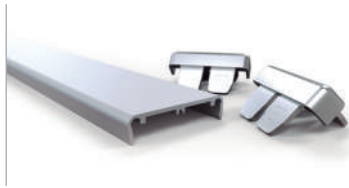
Edgebanding



EURO 19

Lenght 9.84 ft.
Code: EURO19

Terminals for Euro 19 edgebanding
Code: EM19 matt / EB19 chrome



EURO COMPACT 18

Lenght 9.84 ft.
Code: EUROC18

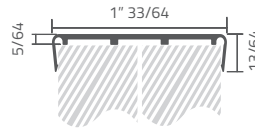
Terminals for Euro C 18 edgebanding
Code: ECM18 matt / ECB18 chrome



EURO COMPACT 36

Lenght 9.84 ft.
Code: EUROC36

Terminals for Euro C 36 edgebanding
Code: ECM36 matt / ECB36 chrome



Edgebanding Family

Grupo Euro | 10

Basic



ANGLE

Lenght 9.84ft.



1/2 x 1/2 x 3/64
Code: L12

47/64 x 47/64 x 3/64
Code: L18

63/64 x 63/64 x 3/64
Code: L25

47/64 x 1" 7/16 x 3/64
Code: L18x36

FLAT

Lenght 9.84ft.



3/4 x 5/64
Code: P19

1" 17/64 x 5/64
Code: P32

1" 31/32 x 1/16
Code: P50

3" 15/16 x 1/16
Code: P100

T-PROFILE

Lenght 9.84ft.



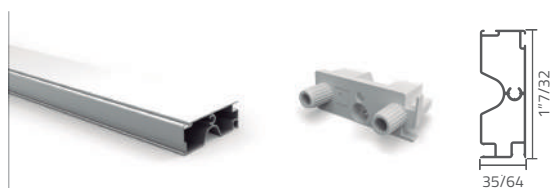
47/64 x 47/64 x 3/64
Código: MT18



STRUCTURAL CONNECTOR

Lenght 9.84ft.
Code: CE

Structural connector fixation
Code: FCE



SHELF SUPPORT

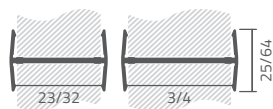
Lenght 9.84ft.
Code: SE18 / SE19

Shelf support cover
Code: TSE



HU

Lenght 9.84ft.
Code: HU18 / HU19



HANGING BAR TUBULAR PROFILE

Lenght 9.84ft.
Code: OVO

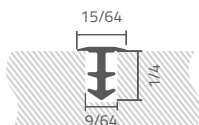
Center support
Code: SCO

Lateral support
Code: SLO



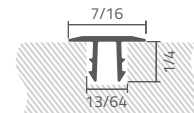
MINI DOOR MOLDING

Lenght 9.84ft.
Code: MPM



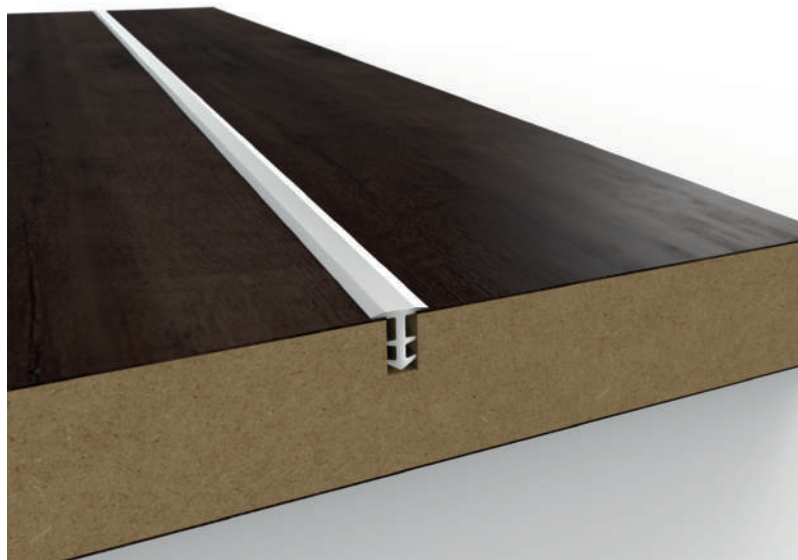
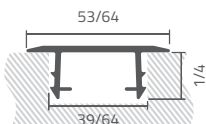
DOOR MOLDING

Lenght 9.84ft.
Code: MP



MAXI MOLDING

Lenght 9.84ft.
Code: MMX



Cabinet Pulls



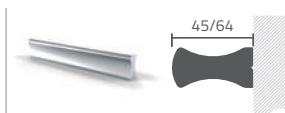
ADHR



ADHJ



INFINIT



BOCK



SCALA



BOTÓN



CLASS



* ALSO AVAILABLE IN BLACK COLOR ● *

ADHR	ADHR84 3 5/6	ADHR116 4 9/16				
ADHJ	ADHJ84 3 5/6	ADHJ116 4 9/16				
self-adhesive						
Infinít	IN52	IN84	IN116	IN148	IN180	IN212
Bock	BC52	BC84	BC116	BC148	BC180	BC212
Scala	SC52	SC84	SC116	SC148	SC180	SC212
Drilling distance	1 17/64	2 33/64	3 25/32	5 3/64	6 19/64	7 9/16
Class	CL40	CL70	CL116	CL168	CL212	
Drilling distance	63/64	1 31/32	2 63/64	5 3/64	6 49/64	

Baseboard

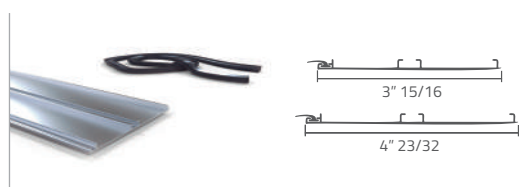
Cabinet Pulls Family

Grupo Euro 12



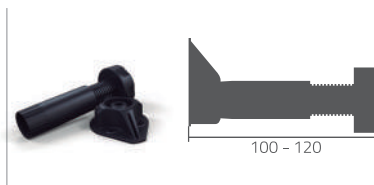
BASEBOARD

Length 9.84 ft. - with weatherstrip
Code: Z10 / Z12



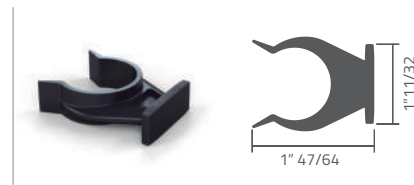
LEG

Height adjustable
Code: PTZ



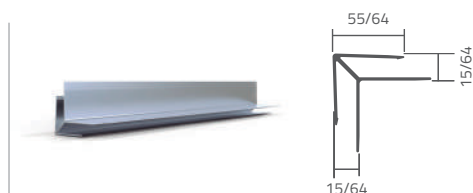
CLIP

Code: CPZ



CORNER BRACKET

Lengths 3\"/>



BASEBOARD UNION

Lengths 3\"/>





UPPER GOLA

Lenght 9.84 ft.
Code: GS

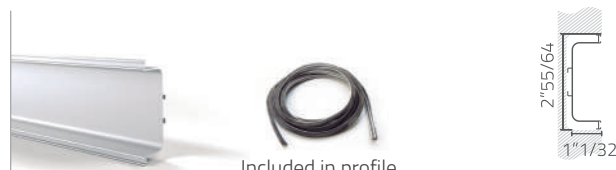


Included in profile

* ALSO AVAILABLE IN BLACK, WHITE, GOLD AND POLISHED ● ○ ● ● *

MIDDLE GOLA

Lenght 9.84 ft.
Code: GM



Included in profile

* ALSO AVAILABLE IN BLACK, WHITE, GOLD AND POLISHED ● ○ ● ● *

FIXING PLATE

Code: ESGL



END CAPS

Code: TGS / TGM



INTERNAL CORNER

Code: EIGL

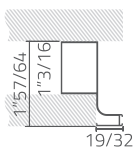


* ALSO AVAILABLE IN BLACK AND WHITE ● ○ *

GOLA MINI SYSTEM

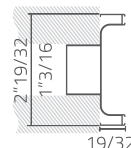
UPPER MINI GOLA

Lenght 9.84 ft.
Code: GSM



MIDDLE MINI GOLA

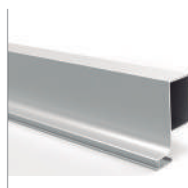
Lenght 9.84 ft.
Code: GMM



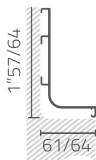
VERTICAL GOLA SYSTEM

VERTICAL SIDE GOLA

Lenght 9.84 ft.
Code: GVL



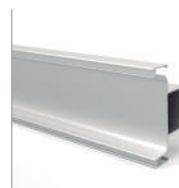
Included in profile



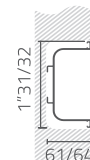
* ALSO AVAILABLE IN BLACK AND WHITE ● ○ *

VERTICAL MIDDLE GOLA

Lenght 9.84 ft.
Code: GVM



Included in profile

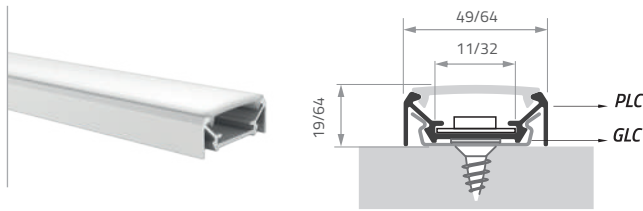


* ALSO AVAILABLE IN BLACK AND WHITE ● ○ *

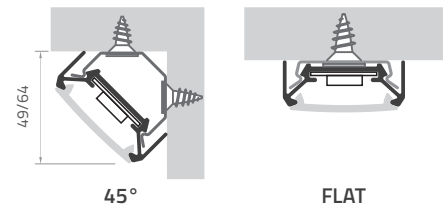


LED PROFILE FOR CLIPPING WITH DIFFUSER

Length 9,84 ft.
Code: PLC



UN PERFIL DOS PRODUCTOS



ACCESSORIES FOR CLIPPING LED PROFILE

45° CAP

For Led Profile Clipping
Code: T45LC



45° BRACKET

For Led Profile Clipping
Code: G45LC



90° CAP

For Led Profile Setting
Code: TLC



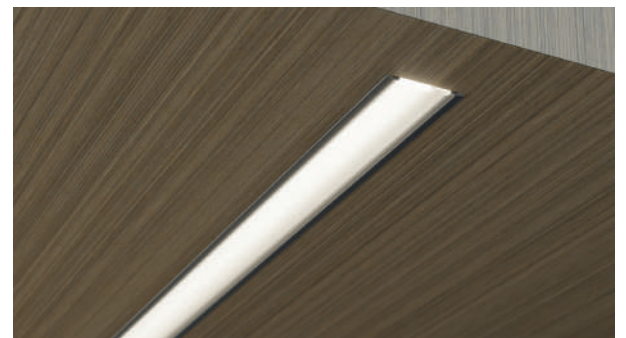
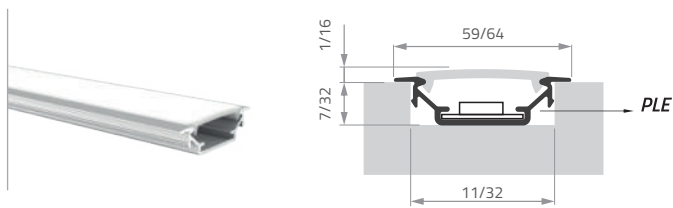
90° BRACKET

For Led Profile Setting
Code: GLC



LED PROFILE FOR FITTING WITH DIFFUSER

Length 9,84 ft.
Code: PLE



Indoor use only

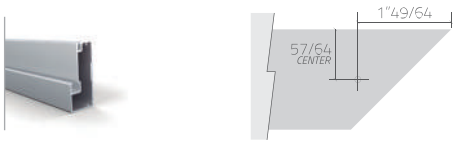


Doors



INTER

Length 9.84 ft.
Code: INTER



* ALSO AVAILABLE IN BLACK COLOR ●*

INTER M

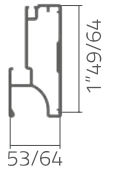
Length 9.84 ft.
Code: INTERM



Terminals for Inter M profile
Code: TINTERM



* ALSO AVAILABLE IN BLACK COLOR ●*



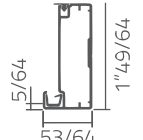
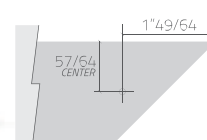
ZENIT

Length 9.84 ft.
Code: ZENIT



TOP

Length 9.84 ft.
Code: TOP



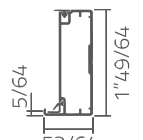
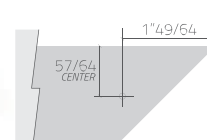
CITY

Length 9.84 ft.
Code: CITY



SIERRA

Length 9.84 ft.
Code: SIERRA



* ALSO AVAILABLE IN BLACK COLOR ●*

MIRROR

Length 9.84 ft.
Code: PE



All profiles are suitable for 1/8" and 5/32" thick glass

20/45

Code: ES2045



INTER
CITY
TOP
SIERRA
ZENIT

20/45

Easy assembly
Code: ES2045AR



INTER
CITY
TOP
SIERRA

20/47

Easy assembly
Code: ES2047AR



ZENIT

STRETCHING

INCLUDED IN THE PROFILES



FOR GLASS

INTER - ZENIT - TOP-QUADRO



ANTI DUST

INTER - TOP- SIERRA



FOR SAW

SIERRA

HOLE SAW

35mm

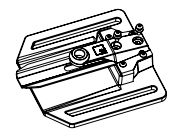
Code: CP35



DOOR DRILLING

TEMPLATE

Code: MTZ-P



The head has a +/- 2mm register for precise centering once the base is attached to the bench drill.

Furniture Hardware



EUROSOFT SMALL SLIM BOX

Soft Closing - Load capacity 77lb



Color Pearl White ○

CODE	HIGHT	LENGTH
ESL.086.350.B	3"25/64	14"
ESL.086.400.B	3"25/64	16"
ESL.086.500.B	3"25/64	20"



Color Iron Grey ●

CODE	HIGHT	LENGTH
ESL.086.350.A	3"25/64	14"
ESL.086.400.A	3"25/64	16"
ESL.086.500.A	3"25/64	20"

EUROSOFT MEDIUM SLIM BOX

Soft Closing - Load capacity 77lb



Color Pearl White ○

CODE	HIGHT	LENGTH
ESL.120.400.B	4"23/32	16"
ESL.120.500.B	4"23/32	20"



Color Iron Grey ●

CODE	HIGHT	LENGTH
ESL.120.400.A	4"23/32	16"
ESL.120.500.A	4"23/32	20"

Grupo Euro | 16

EUROSOFT LARGE SLIM BOX

Soft Closing - Load capacity 77lb



Color Pearl White ○

CODE	HIGHT	LENGTH
ESL.167.400.B	6"37/64	16"
ESL.167.500.B	6"37/64	20"



Color Iron Grey ●

CODE	HIGHT	LENGTH
ESL.167.400.A	6"37/64	16"
ESL.167.500.A	6"37/64	20"

EUROSOFT BIGGEST SLIM BOX

Soft Closing - Load capacity 77lb



Color Pearl White ○

CODE	HIGHT	LENGTH
ESL.199.400.B	7"53/64	16"
ESL.199.500.B	7"53/64	20"



Color Iron Grey ●

CODE	HIGHT	LENGTH
ESL.199.400.A	7"53/64	16"
ESL.199.500.A	7"53/64	20"

Furniture Hardware



EUROSOFT SLIDING BOX

3"5/16 X 20" / Load capacity 77lb



Code: ES84B - White ○



Code: ES84G - Gray ●



Code: ES84A - Anthracite ●

ACCESSORIES SQUARE SIDE

Railing



Code: GCE584B - White ○



Code: GCE584G - Gray ●



Code: GCE584A - Anthracite ●

OPTIONALS

Sold Separately

TELESCOPIC DRAWER SLIDES

Zinc plated finish



PRODUCT DETAILS	SIMPLE	SOFT CLOSING	EXTENSION
	ZINCPLATED	ZINCPLATED	
1"49/64 height, full extension telescopic slide Thickness: 3/64 x 3/64 x 3/64	GT 4525 Z	GT 4525 ZS	10"27/32
	GT 4530 Z	GT 4530 ZS	12"13/16
	GT 4535 Z	GT 4535 ZS	14"25/32
	GT 4540 Z	GT 4540 ZS	16"3/4
	GT 4545 Z	GT 4545 ZS	18"23/32
	GT 4550 Z	GT 4550 ZS	20"11/16
	GT 4555 Z	GT 4555 ZS	22"21/32
	GT 4560 Z	GT 4560 ZS	24"5/8

EURO TYPE UNDERMOUNT SLIDE

Full extension soft closing

16mm clip board 2D plastic lock, Load Capacity 77lb

1.8 x 1.5 x 1.00 mm - Sideboard up to 5/8"

Optional: Clip Board 3D



Code:
 UM30(12") Length 300mm
 UM35(14") Length 350mm
 UM40(16") Length 400mm
 UM45(18") Length 450mm
 UM50(20") Length 500mm
 UM55(22") Length 550mm

NOMINAL LENGTH	DRAWER LENGTH	INTERNAL DEPTH (outside minimum)	
10" 250mm	240mm	259mm	259mm + X
12" 300mm	290mm	309mm	309mm + X
14" 350mm	340mm	359mm	359mm + X
16" 400mm	390mm	409mm	409mm + X
18" 450mm	440mm	459mm	459mm + X
20" 500mm	490mm	509mm	509mm + X
22" 550mm	540mm	559mm	559mm + X
24" 600mm	590mm	609mm	609mm + X

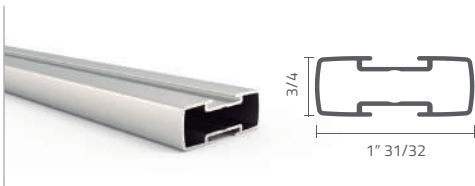
X: Panel Thickness



To solve the interior of your closet or use in different environments

STRUCTURE

POLE PROFILE
Length 8.53 ft.



CEILING MOUNT BRACKET



POLE BOTTOM PLATE



COLUMN SUPPORT

SHELF TOP SUPPORT



SHELF BOTTOM SUPPORT



HANGING BAR POLE SUPPORT



WALL BRACKET

DRAWER WALL SUPPORT
63/64 x 63 x 64 x 3/64
Code: L25



WALL SHELF SUPPORT



HANGING BAR SIDE SUPPORT



ACCESSORIES

HANGING BAR TUBULAR PROFILE
Code: OVO



Sliding Systems



	Maximum Width	Maximum Height	Depth	Bottom Track	Top Track Rail	Handle	Roller	Upper Roller	Color
Classic	9.84ft.	8.53 ft.	2" 53/64				 Useful Load 110lb		<input checked="" type="radio"/> Anodized <input type="radio"/> Black
GE52	9.84 ft.	6.56 ft.	2" 41/64			 Optional	 Useful Load 66lb		<input type="radio"/> Anodized
Office	4.92 ft.	3.94 ft.	2" 13/64			 Optional	 Useful Load 33lb		<input type="radio"/> Anodized
DF	9.84 ft.	8.53 ft.	2" 19/32				 Useful Load 121lb		<input type="radio"/> Anodized
Sicco	9.84 ft.	8.53 ft.	1" 3/16 Optional valance			 Optional	 Useful Load 99lb / 132 lb		<input type="radio"/> Anodized

Grupo Euro | 19



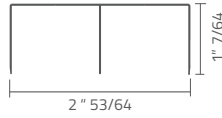
Classic System



KIT INCLUDED

TOP TRACK

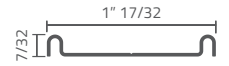
1 un.



* ALSO AVAILABLE IN BLACK COLOR ● *

BOTTOM TRACK

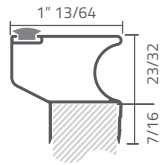
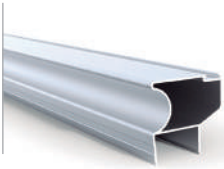
1 un.



* ALSO AVAILABLE IN BLACK COLOR ● *

HANDLE PROFILE

4 un.



* ALSO AVAILABLE IN BLACK COLOR ● *

PILE

8.53 ft. 7x5
4 un.



HOLDER

Code: RTN - 2 un.



ROLLER

Useful load 110 lb. 40000 cycles x wheel



UPPER ROLLER

4 un.



OPTIONALS

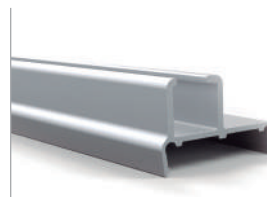
Sold Separately

FSC - Brake Sliding System



BOARD GLASS

Transition
For 45/64 & 3/4 boards. Length 9.84 ft.
Code: T18V-T19V



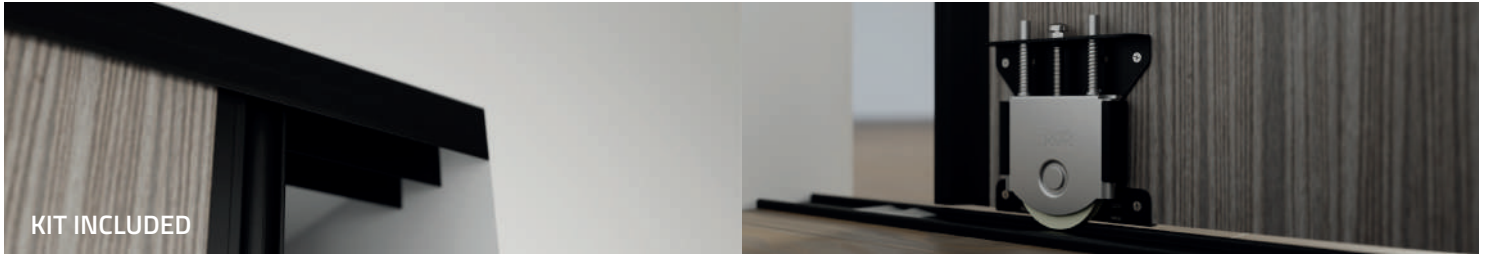
HANDLE GLASS

Transition
Length 9.84 ft.
Code: TMV18/TMV19



Maximum Closet Width		
CL200 18-19 6.56ft.	CL300 18-19 9.84ft.	CLH18-19
Profile Cuts		
FOR 2 OR 4 SHEETS	FOR 3 SHEETS	IN ALL CASES
Width = Middle Width - 1" 1/32 N° Door Sheets	Width = Middle Width - 25/32 N° Door Sheets	Height = Shortest height - 1" 3/16 (left or right)
Profile Cuts		
Upper guide length Top width - 5/64	Bottom guide length Bottom width - 5/64	Handle profile length Height - 1" 3/16

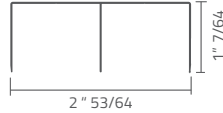
Black Sistema Classic



KIT INCLUDED

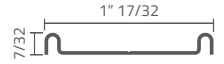
TOP TRACK

1 un.



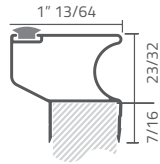
BOTTOM TRACK

1 un.



HANDLE PROFILE

4 un.



PILE

8.53 ft. 7x5
4 un.



HOLDER

Code: RTN - 2 un.



ROLLER

Useful load 110 lb. 40000 cycles x wheel



UPPER ROLLER

4 un.



Grupo Euro | 21

Maximum Closet Width		
CL200N 18-19 6.56ft.	CL300N 18-19 9.84ft.	CLHN18-19
Profile Cuts		
FOR 2 OR 4 SHEETS	FOR 3 SHEETS	IN ALL CASES
Width = Middle Width - 1" 1/32 N° Door Sheets	Width = Middle Width - 25/32 N° Door Sheets	Height = Shortest height - 1" 3/16 (left or right)
Profile Cuts		
Upper guide length Top width - 5/64	Bottom guide length Bottom width - 5/64	Handle profile length Height - 1" 3/16

GE52 System

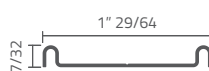


KIT INCLUDED

TOP TRACK
1un.



BOTTOM TRACK
1un.



UPPER ROLLER
4 un.



ROLLER
4 un.



Useful load 66lb.
40000 cycles x wheel

OPTIONALS
Sold Separately

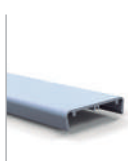
HANDLE PROFILE

For 45/64 & 3/4 boards.
Length 9.84 ft.
Code: MGE18/MGE19



EURO19

For 45/64 & 3/4 boards.
Length 9.84 ft.
Code: EUROC18/EURO19



Maximum Closet Width

GE200 6.56ft.

GE300 9.84ft.

Plate Cuts

FOR 2 OR 4 SHEETS

Width = Middle Width - 5 / 16
N° Door Shets

IN ALL CASES

Height= Shortest Height - 55/64
(left or right)

Profile Cuts

Top Track Length
Top Width -5/64

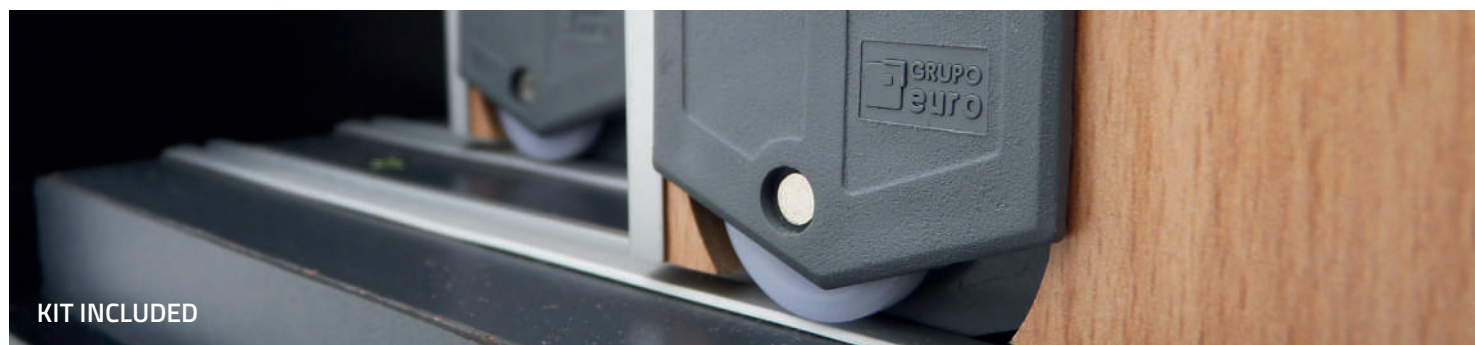
Bottom Track Length
Bottom Width -5/64

Handle Profile Length
Height-55/64

Office System

GE52 System

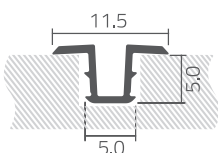
22
Grupo Euro



KIT INCLUDED

TOP / BOTTOM TRACK

Length 9.84ft.
Code: GO (50un)



HIDDEN GUIDE

4 un.



ROLLER

4 un.



Useful load 33lb.
40000 cycles x wheel

OPTIONALS
Sold Separately

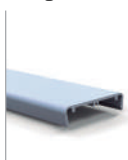
HANDLE PROFILE

For 45/64 & 3/4 boards.
Length 9.84 ft.
Código: MGE18/MGE19



EURO19

For 45/64 & 3/4 boards.
Length 9.84 ft.
Código: EUROC18/EURO19



Maximum Closet Width

OFFICE 4.92ft.

Plate Cuts

FOR 2 OR 4 SHEETS

Width = Middle Width + 5 / 16
N° Door Shets

IN ALL CASES

Height= Shortest Height - 25/64
(left or right)

Profile Cuts

Top Track Length
Top Width -5/64

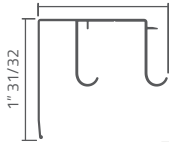
Bottom Track Length
Bottom Width -5/64

Handle Profile Length
Height-55/64

DF System



UPPER RAIL
With Valance / 1 un.



EXTERNAL GUIDE
2 un.



INTERNAL GUIDE
2 un.

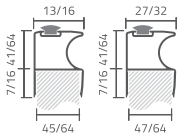


DOUBLE ROLLER
4 un.



Useful load 121 lb.
40000 cycles x wheel

HANDLE PROFILE
Code: MDF 4 un.



OPTIONALS
Sold Separately

BOARD GLASS
Transition
For 45/64 & 3/4 boards.
Length 9.84 ft.
Code: T18V-T19V



HANDLE GLASS
Transition
Length 9.84 ft.
Code: TMV18/TMV19



Maximum Closet Width	
DFM2 6.56ft.	DFM3 9.84ft.
Plate Cuts	
WITH HANDLE	WITHOUT HANDLE
width = half width - 1" 1/16 N° Door Sheets	width = half width + 9/32 N° Door Sheets
EN TODOS LOS CASOS	
height = smallest height - 2" 1/64 (left or right)	
Profile Cuts	
Upper guide length Top width - 5/64	Handle profile length Height - 2" 1/64

Sicco System



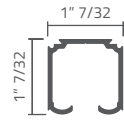
DOUBLE SYSTEM
1 un.



1 Rail / 2 Rollers



Useful load 132 lb.
40000 cycles x wheel



DOOR STOPPER
1 un.



INTERNAL
1 un.



EXTERNAL
1 un.



PLASTIC COVER CAP
for profile without valance
5 pair (10un)



OPTIONALS
Sold Separately

VALANCE
Lengths 6.56 and 9.84
Code: CC2-CC3



RAIL ATTACHMENT
to wall
Code: SSP



Maximum Closet Width	
SD2 6.56 ft.	SD3 9.84 ft.
Plate Cuts	
SUGGESTED MEASURE	DOUBLE SICCO
Width = opening width + 3" 15/16	Door height = height - 2" 13/32
Profile Cuts	
Upper guide length Opening width x 2 + 5" 29/32	Handle profile length height - 2" 13/32

DF system

