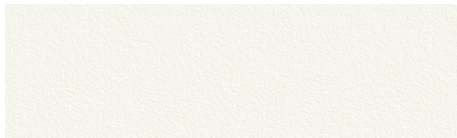
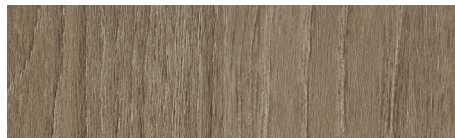


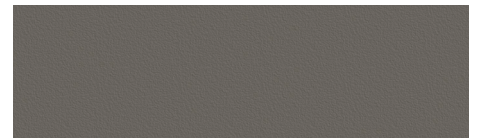
# 2D + 3D Laminates BY DECOTONE



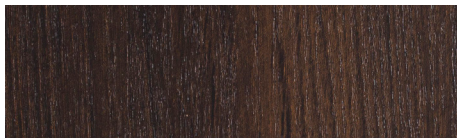
Snow Fall



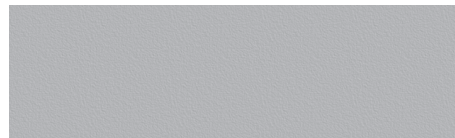
Mystiq



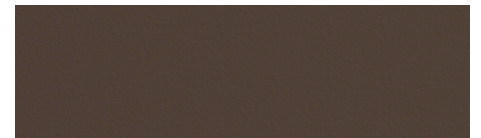
Sun Down



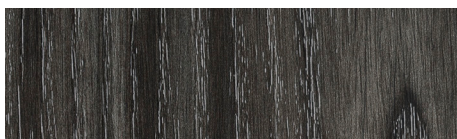
Ember



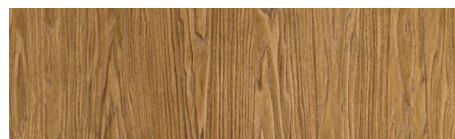
Rain Cloud



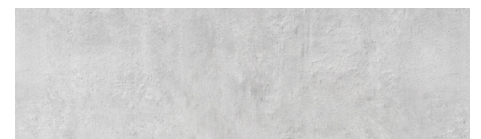
Fudge



After Hours



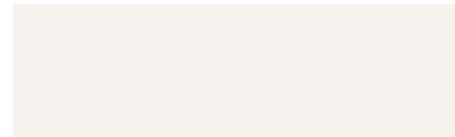
Tea For Two



Silver



Denim



Crema



Indigo



Ocre Rouge



Toasted Oak



Saffron

100% MADE IN ITALY  
please visit [www.decotonesurfaces.com](http://www.decotonesurfaces.com) for more information

# ITALIAN STYLE. ITALIAN DESIGN. INNOVATIVE SURFACES.



A CONSTANT EVOLUTION OF FINISHES, TEXTURES, COLORS AND WOODGRAINS DEVELOPED WITH A FIRM EYE ON MARKET TRENDS TO OFFER INNOVATIVE DESIGN POSSIBILITIES.

1

#### APPLICATIONS:

For both Residential and Commercial markets. Residential- Home Storage, Cabinets, Closets, Doors. Commercial- Hotels and Restaurants, Store Fixtures, Exhibit Manufacturing, Office Furniture, etc.

2

#### FEATURES:

Provides today's leading edge technology in decorative surfaces. This diverse collection is ideal both aesthetically as well as performance for your 2D and 3D applications. This collection of more than 130 stock colors and designs offers direct matches to North America's leaders in TFL panel manufacturing. Alfattherm Films offer a wide variety of finishes, including registered embossed woodgrains to nano technology— with fingerprint, scratch resistant and repairable surfaces.

## FLEXIBLE TO YOUR IMAGINATION.



**Decotone Surfaces**

[WWW.DECOTONESURFACES.COM](http://WWW.DECOTONESURFACES.COM)